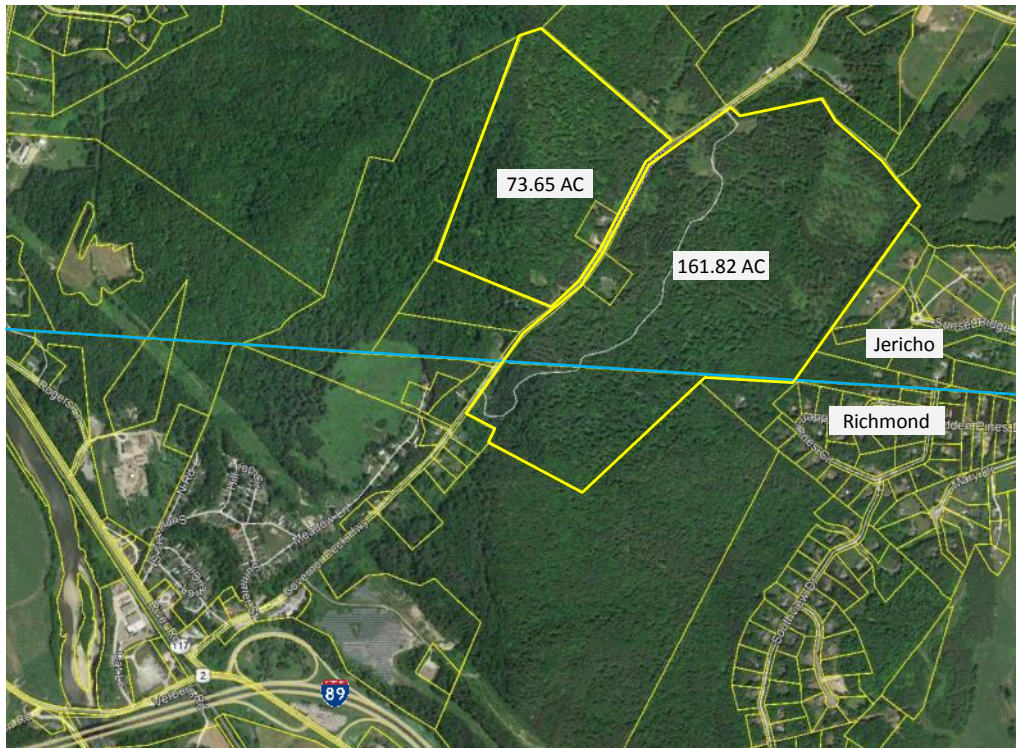


RESIDENTIAL DEVELOPMENT OPPORTUNITY

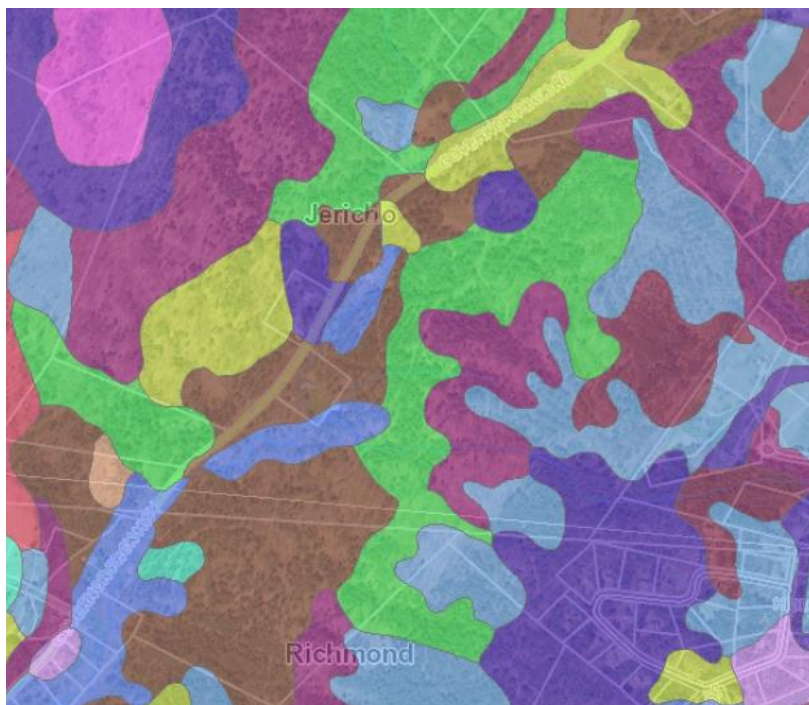
Governor Peck Road, Richmond / Jericho



235 Acres For Sale

- 73.65 acres west of Governors Peck Road (\$595,000)
- 161.82 acres east of Governors Peck Road (\$595,000)
- 22 acres located in Richmond and the balance in Jericho
- Richmond Zoning -High Density Residential
- Jericho Zoning -Rural Agricultural Residential (10 acre)
- The majority of soils are well suited for onsite septic development
- Property is currently in Vermont's Current Use Program with property taxes being \$67.92 in Richmond and \$589.40 in Jericho annually
- Great views of Camels Hump and surrounding mountains
- These sites can be bought together or separate.

SOIL MAP



Asking Price:

**Western Parcel: 73.65 Acres
\$595,000**

**Eastern Parcel: 161.82 Acres
\$595,000**

NAI J.L. Davis Realty

Commercial Real Estate Services, Worldwide.

The information contained herein has been given to us by the owner of the property or other sources we deem reliable; we have no reason to doubt its accuracy, but we do not guarantee it. All information should be verified prior to purchase or lease.

Contact information

Dave Curley
NAI J.L. Davis Realty
Direct: (802) 316-5092
dcurley@jldavisrealty.com
www.jldavisrealty.com

