

RETAIL/OFFICE SPACE FOR LEASE

30 Church Street
Burlington, VT



Space Available:
-650 SF

Features:

- 2nd Floor
- Former Salon Space
- Potential Uses
 - Office
 - Retail
- Great Location on the Historic Church Street Marketplace

Lease Rate:
\$1,200/Month NNN



NAI J.L. Davis Realty

Commercial Real Estate Services, Worldwide.

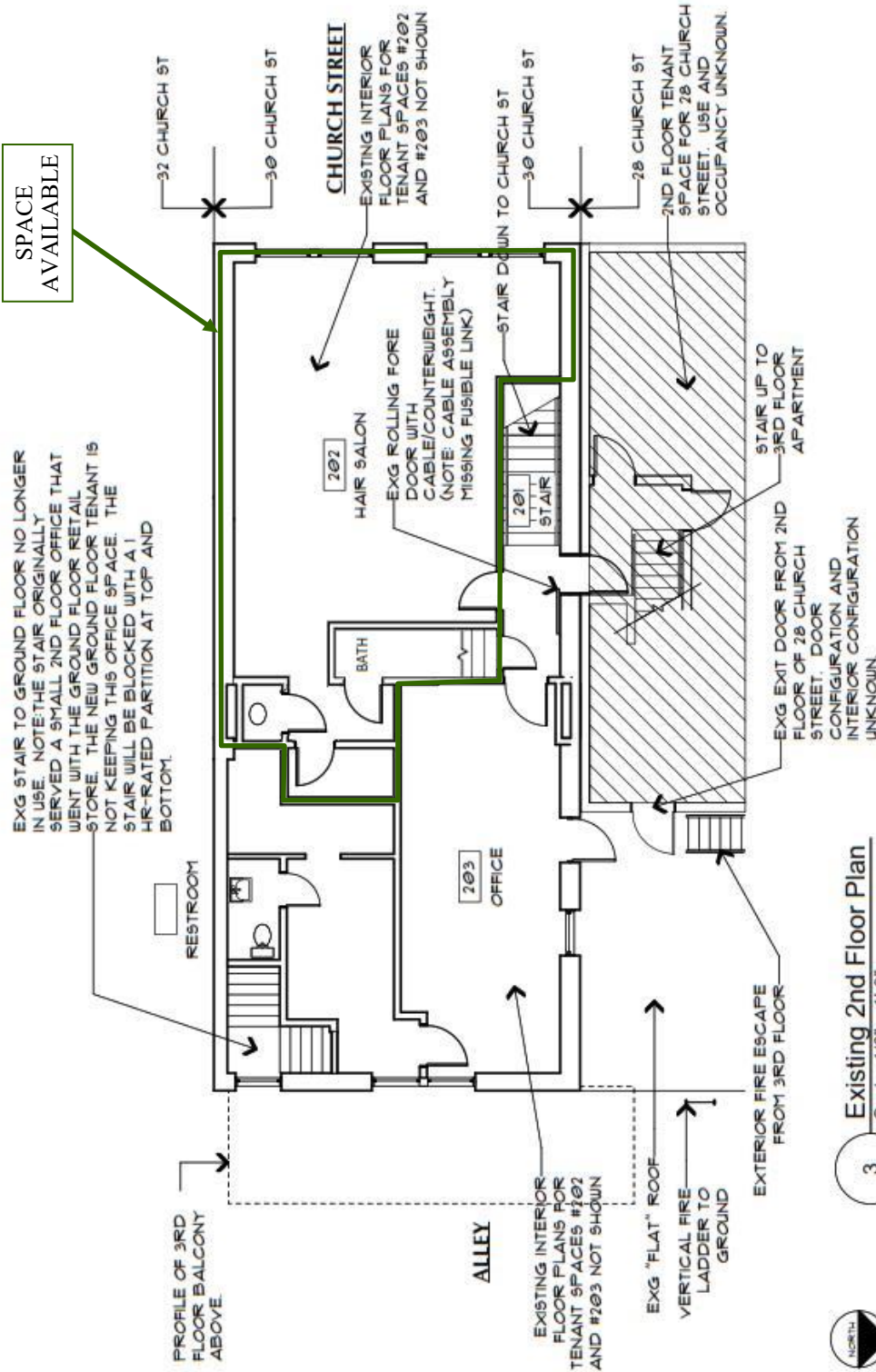
The information contained herein has been given to us by the owner of the property or other sources we deem reliable; we have no reason to doubt its accuracy, but we do not guarantee it. All information should be verified prior to purchase or lease.

Contact Information

Ryan Nick
NAI / J.L. Davis Realty
Office (802) 316-5049
Cell: (802) 557-2619
rnick@jldavisrealty.com



FLOOR PLAN



3 Existing 2nd Floor Plan
Scale: 1/8" = 1'-0"

Drawing EXG 2nd FLOOR PLAN		Project 30 CHURCH STREET Burlington, Vermont	Client toa
Proj No.	2006	Date	12/23/2020
Scale	1/8" = 1'-0"	Drawn By	X-2
Rev.			

toa
Tom O'Brien Architect
150 South Main Street, Suite 100
Burlington, Vermont 05401
Phone: 802.533.1111
Fax: 802.533.1112
Email: toa@toaarchitect.com

SITE AERIAL

UVM: ~13,000 Students and Faculty
FAHC: ~7,150 employees

