

PRIME RETAIL SPACE FOR LEASE
24 Church Street Marketplace
Burlington, VT



Size: 2,560 SF

Features:

- Located on the award winning Church Street Marketplace
- Showcase Windows
- Excellent Signage Opportunities
- Electrical Service: 3-Phase
- Ceilings Heights: 11'8"
- Lower Level Storage
- Public Garage Nearby
- Nearby Tenants:
 - Banana Republic
 - Chase Bank
 - Lululemon
 - Brandy Melville
 - Urban Outfitters

Lease Rate: \$35.00/SF NNN

NAI J.L. Davis Realty

Commercial Real Estate Services, Worldwide.

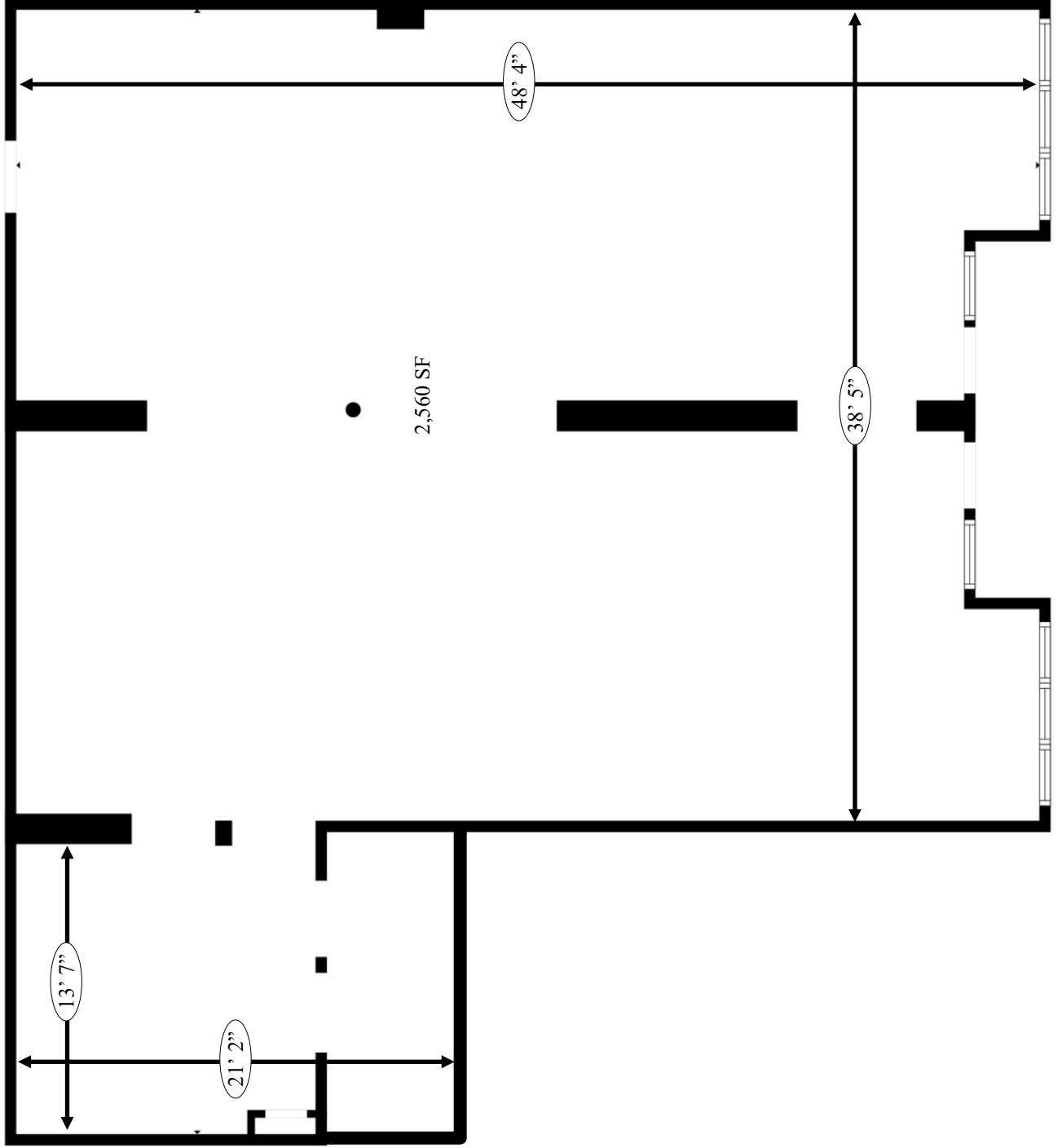
The information contained herein has been given to us by the owner of the property or other sources we deem reliable; we have no reason to doubt its accuracy, but we do not guarantee it. All information should be verified prior to purchase or lease.

Contact Information

Jeff Nick
NAI J.L. Davis Realty
Direct: (802) 876.6923
Fax: (802) 651-0101
Email: jeff@jeffnick.com
www.jldavisrealty.com



FLOOR PLAN



UVM: ~13,000 Students and Faculty
FAHC: ~7,150 employees



UVM: ~13,000 Students and Faculty
FAHC: ~7,150 employees

